

Product Catalogue

Reliable cooling in the laboratory and health sector



Blood



Pharmaceutical



Laboratory



Temperature
Documentation

Table of Contents

Pioneer and market leader with a long tradition	4
Innovative cooling – built in Germany, produced for the world	6
Constant temperatures and optimum storage safety	8
Explosion protection at the highest level	10
The highest standards and sustainable solutions	12
Our three production lines	14
ULTIMATE	16
PRO ACTIVE	18
ESSENTIAL	20
Our complete product overview	22
Blood bank refrigerators and blood plasma freezers	24
Pharmaceutical refrigerators and freezers	30
Laboratory refrigerators and freezers	36
Temperature documentation with KIRSCH DATANET	48
Accessories	50

Dr. Kopitzke and employees at
the Willstätt location

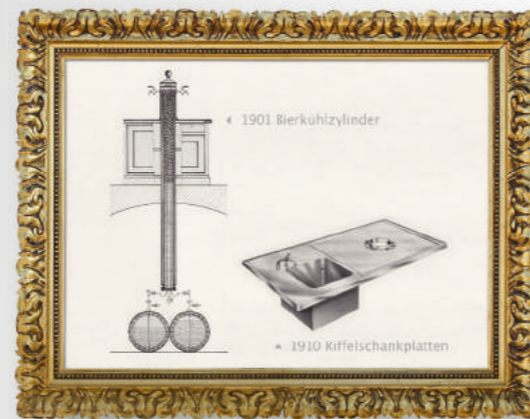


Pioneer and market leader with a long tradition

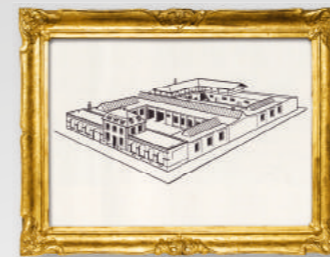
The success story of our brand started in the year 1865, the year of its inception. Since it was established, we have been a family-run company and have continued to develop and increase our know-how over generations. Based on over 150 years of experience in appliance engineering and later in medical refrigerators and freezers, we are continually optimizing and extending our product range. We have always been synonymous with high-quality products that meet the most stringent standards and offer maximum reliability. Our customers today include pharmacies, hospitals, clinics, blood banks, institutes and laboratories in over 100 countries.



1865 Philipp Kirsch establishes his coppersmith firm



1901 Production of beer cooling cylinders and stainless steel drop-in basins



1927 Large trade business is transformed into an industrial factory



1929 Bottled beer refrigerators manufactured from galvanised steel sheet



1970s Pharmaceutical refrigerators



1956 First electrical refrigerators



2017 New plant in Willstätt



 **Kirsch**
Made in Germany. Since 1865.

Innovative cooling – built in Germany, used all over the world

We take proven and reliable products to the next level. Our highly motivated development team is continuously setting high standards of product quality, functionality and efficiency.

We work in a sustainable, energy-saving and resource-efficient manner by using state-of-the-art technology and production methods. In addition, our restructured production concept speeds up product development and makes meaningful use of our capacities.

Company Kirsch is very active and engaged in DIN committees to help develop the future of cooling.. For example, we have developed a new cooling technology, called magnetocalorics.

As a leading innovator in this area, we are working towards getting this technology market ready.



Constant temperatures and optimum storage safety

Temperature stability is a decisive factor in the safe storage of sensitive chilled goods. Thanks to perfectly matched components, our products offer the best cooling conditions and the most accurate temperature control in the world. This is achieved by our newly developed PRO-ACTIVE controller with two standard built-in PT-1000 sensors. Temperature deviations in the interior can therefore be minimised to just 1.5 °C from the warmest to the coldest point (confirmed by a DIN measurement, available for models BL, MED, LABO and LABEX). An automatic product monitoring and early pro-active warning system allows for convenient, stress free handling and fast response times which further increases safety. To guarantee this, every single one of our devices is precisely calibrated and tested in a trial run lasting several hours during final inspection. Another important benefit – in addition to the electronic control's high degree of reliability – are the savings in energy consumption of up to 60%.



The image shows the complete documentation.



Explosion protection at the highest level

Kirsch is a specialist in the safe and precise storage of flammable substances. We offer laboratory refrigerators and freezers with explosion-proof interiors for highly flammable chilled goods. We stand behind our 100% safety guarantee of our products when used as intended. Our LABEX® models, specially developed for these requirements, fulfil the most stringent safety standards. The TÜV-certified safety concept with a technical report protects contents and operating personnel alike.

Dr. Jochen Kopitzke,
CEO and owner

The highest standards and sustainable solutions

Quality assurance made easy: all important device data like data required for inspections by authorities, amongst others, can be accurately recorded and evaluated with the KIRSCH temperature documentation (standard on devices with PRO-ACTIVE control). A connection to the IT network enables live transmission of data, alarm forwarding to the PC as well as direct sending of warnings by email. Thanks to automatic data capture, our customized digital solutions are extremely resource-efficient. And more importantly: if in doubt, they serve as a reliable source of information to determine whether a certain chilled good can still be used. Our ISO-certified KIRSCH refrigerators and freezers are ideally designed especially for areas with the strictest cooling requirements. We use stable processes to ensure maximum safety and quality of our devices and services.

In addition to complying with the highest quality standards, we also consider sustainability to be a very important topic. All our products are designed for a long service life. This helps to preserve our planet's natural resources and means cost savings for our customers. At the same time, we have been able to permanently reduce power consumption as well as our noise emissions to far below the limit. With these measures, we are promoting the sustainable development of Philipp Kirsch GmbH, which is at the core of our company philosophy.



We would like to present our
three product lines to you

ESSENTIAL

*E*ULTIMATE

PROACTIVE

ESSENTIAL

ENTIAL

*E*ULTIMATE

PROACTIVE

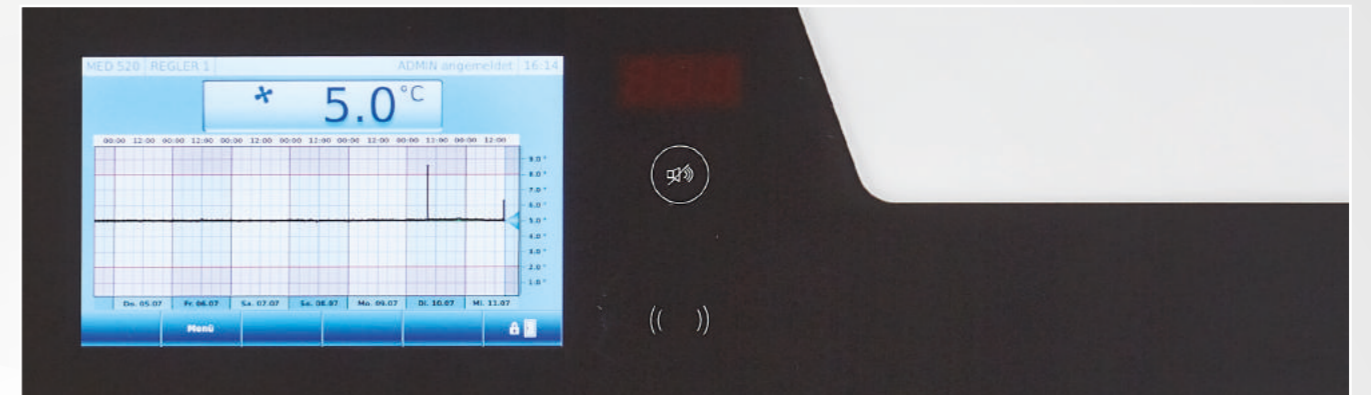
*E*ULTIMATE

*E*UL

ULTIMATE



BL 520 ULTIMATE



- Elegant glass design
- Simple operation via a capacitive touch display
- Access control with a log
- Graphical display of the temperature curve and min/max temperature
- Digital data documentation with KIRSCH Datonet software
- Quick-start
- Touch operation with laboratory gloves is possible
- Intuitive help with alarm messages and troubleshooting in plain text
- Operation via remote control is possible
- Includes the benefits of the PRO-ACTIVE line (page 18)

ULTIMATE

PROACTIVE



- Reduction of power consumption by up to 60%
- Faster response times in case of impending faults thanks to proactive alerts
- Reduction of temperature deviations in the refrigerated compartment
- Maximum storage safety due to perfectly matched components
- Includes the benefits of the ESSENTIAL line (page 20)

PROACTIVE

ESSENTIAL



- Your entry into KIRSCH quality
- Maximum reliability
- Durable
- Temperature stability
- Flexibility
- Maximum safety

ESSENTIAL

Our complete product overview



Blood bank refrigerators and blood plasma freezers



Pharmaceutical refrigerators and freezers



Laboratory refrigerators and freezers



Temperature documentation

BLOOD

PHARMACEUTICALS

LABORATORY

TEMPERATURE



Blood bank refrigerators compliant with DIN 58371

Blood plasma freezers compliant with DIN 58375

- Blood bank refrigerators and blood plasma freezers are subject to the Medical Devices Directive
- Process-controlled temperature and defrost control for maximum temperature stability
- Alerts in case of power failure
- Automatic defrost and defrost water evaporation
- Re-circulating air cooling
- Self-closing door
- Blood reserves are stored at +4°C compliant with DIN 58371
- Blood plasma is stored at a minimum of -30 °C compliant with DIN 58375

(Equipment is model-dependent, sold only through authorised dealers)



FROSTER BL 180 PRO-ACTIVE



FROSTER BL 330 PRO-ACTIVE



BL 520 ULTIMATE

Blood bank refrigerators



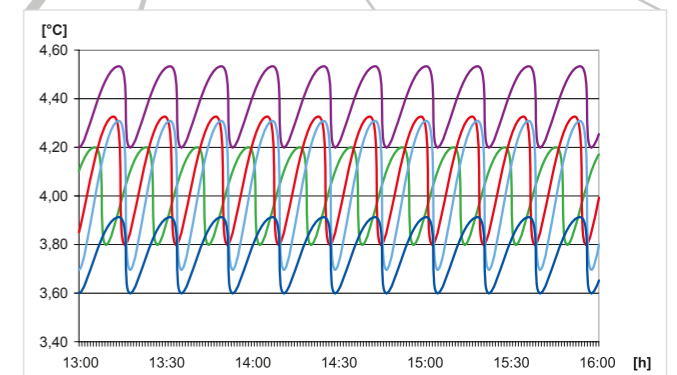
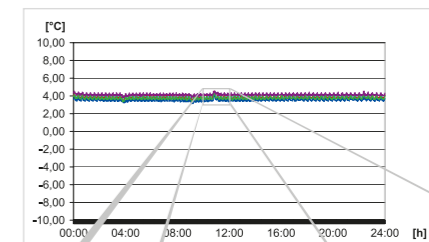
ULTIMATE	–	–	BL 300 ULTIMATE*	BL 520 ULTIMATE	BL 720 ULTIMATE
PRO-ACTIVE	BL 100 PRO-ACTIVE	BL 176 PRO-ACTIVE	BL 300 PRO-ACTIVE	BL 520 PRO-ACTIVE	BL 720 PRO-ACTIVE
ESSENTIAL	–	–	–	–	–
PC-KIT-NET	Standard on the ULTIMATE, optional on the PRO-ACTIVE, not available on the ESSENTIAL				
Capacity	95 l	170 l	280 l	500 l	700 l
Temperature setting	+4 °C	+4 °C	+4 °C	+4 °C	+4 °C
Voltage	220 - 240 V/50 Hz	220 - 240 V/50 Hz	220 - 240 V/50 Hz	220 - 240 V/50 Hz	220 - 240 V/50 Hz
Refrigerating machine for 60 Hz operation	optional	optional	optional	optional	optional
Power consumption (in watts)	92	120	95	250	250
Normal consumption (in kWh/24 h)	0.64	1.22	0.63	1.5	1.56
Permitted ambient temperature	from +10 °C to +38 °C	from +10 °C to +38 °C	from +10 °C to +38 °C	from +10 °C to +38 °C	from +10 °C to +38 °C
Heat emission (max. in watts)	195	186	170	554	554
Exterior dimensions (incl. distance from wall and door handle) (W x D x H in cm)	54 x 54 x 82	70 x 77 x 122	67 x 75 x 131/67 x 75 x 124	77 x 76 x 195.5	77 x 98 x 195.5
Interior dimensions (W x D x H in cm)	44 x 43 x 47 (usable width 2 cm, usable depth 7 cm, usable height 8 cm less)	55 x 52 x 60 (usable width 3 cm, usable depth 9 cm, usable height 13 cm less)	55 x 51 x 100 (usable width 2 cm, usable depth 5 cm, usable height 13 cm less)	62 x 56 x 140 (usable width 2 cm, usable depth 11 cm, usable height 13 cm less)	62 x 77 x 140 (usable width 2 cm, usable depth 11 cm, usable height 13 cm less)
Exterior dimensions with door open at 90° (W x D in cm)	54 x 106	70 x 136	67 x 133	77 x 144	77 x 166
Drawer inner dimensions (W x D x H in cm)	37 x 32 x 8.5	50 x 34 x 10	49 x 39 x 10 top drawers 51 x 31 x 10 bottom drawer	56 x 39 x 10	56 x 60 x 10
Max. load: drawer	25 kg	50 kg	50 kg	50 kg	50 kg
Weight	net 46 kg/gross 55 kg	net 77 kg/gross 87 kg	net 82 kg/gross 92 kg	net 139 kg/gross 160 kg	net 171 kg/gross 196 kg
Noise emission (for Ecool R600a)	40.5 dB (A)	38.6 dB (A)	40.3 dB (A)	41.2 dB (A)	41.8 dB (A)
Automatic defrost	✓	✓	✓	✓	✓
Defrost water container for manual draining	optional	optional	optional	optional	optional
Temperature deviation Δ T compliant with DIN 58371 without defrosting	0.9 °C	0.3 °C	0.8 °C/0.8 °C	1.1 °C/1.1 °C	1.2 °C/1.2 °C
Re-circulating air cooling	✓	✓	✓	✓	✓
Alerts in case of power failure	✓	✓	✓	✓	✓
Glass door with lock	optional	–	optional	optional	optional
Equipped with castors	optional	optional	optional	✓	✓
External housing – chrome-nickel steel 4301	–	–	–	optional	optional
Tabletop	optional	–	–	–	–
Can be installed normally or under counters	✓	–	–	–	–
Decorative frame	optional	optional	optional	optional	optional
Door coupling fitting	optional	optional	optional	optional	optional
Refrigerating machine fan, built-in	✓	optional	optional	✓	✓
Refrigerating machine, water-cooled	–	–	–	optional	optional
LED lighting strip mounted on the roof of the interior	optional	optional	optional	–	–
LED lighting strip mounted on the side wall of the interior	–	–	–	optional	optional
Adjustment gibs/variable interior arrangement	–	–	✓	✓	✓
Plastic drawer	–	–	–	–	–
Aluminium drawer with roller runners	2	2	4	5	5
Stainless steel drawer with roller runners	–	optional	optional	optional	optional
Drawer insert in a set	–	optional	optional	optional	optional
Vario Support	–	–	optional	optional	optional
Shelf with overlays	–	–	optional	optional	optional
Shelf with rails	–	–	optional	optional	optional
Wire basket with rails	–	–	–	optional	optional

*On request



Uniform temperature distribution

The KIRSCH re-circulating air cooling ensures a uniform storage temperature in the entire cooling space. It is optimised for each model and consists of a perfectly coordinated combination of a blower and air baffle.



Optimum air conduction plan

The combination of an air conduction plan and a temperature control ensures an almost constant cooling temperature in the entire interior, even in the case of changing ambient temperatures.



BLOOD

Blood plasma freezers



ULTIMATE	–	–	FROSTER BL 330 ULTIMATE*	FROSTER BL 530 ULTIMATE	–	FROSTER BL 730 ULTIMATE
PRO-ACTIVE	FROSTER BL 178 PRO-ACTIVE	FROSTER BL 180 PRO-ACTIVE	FROSTER BL 330 PRO-ACTIVE	FROSTER BL 530 PRO-ACTIVE	FROSTER BL 650 PRO-ACTIVE	FROSTER BL 730 PRO-ACTIVE
ESSENTIAL	–	–	–	–	–	–
PC-KIT-NET	Standard on the ULTIMATE, optional on the PRO-ACTIVE, not available on the ESSENTIAL					
Capacity	170 l	170 l	300 l	500 l	650 l	700 l
Temperature setting	approx. -32 °C	approx. -41 °C	approx. -32 °C	approx. -32 °C	approx. -41 °C	approx. -32 °C
Voltage	220 - 240 V/50 Hz	220 - 240 V/50 Hz	220 - 240 V/50 Hz	220 - 240 V/50 Hz	220 - 240 V/50 Hz	220 - 240 V/50 Hz
Refrigerating machine for 60 Hz operation	optional	optional	optional	optional	–	optional
Power consumption (in watts)	500	453	550	740	990	790
Normal consumption (in kWh/24 h)	4.88	6.54	6.59	10.81	14.32	11.1
Permitted ambient temperature	from +10 °C to +32 °C	from +10 °C to +32 °C	from +10 °C to +32 °C	from +10 °C to +32 °C	from +10 °C to +32 °C	from +10 °C to +32 °C
Heat emission (max. in watts)	633	489	713	827	1010	860
Overall dimensions (including distance from wall and door handle) (W x D x H in cm)	70 x 77 x 122	70 x 77 x 122	74 x 78 x 166/74 x 78 x 159	77 x 76 x 195.5	83 x 102 x 197	77 x 98 x 195.5
Interior dimensions (W x D x H in cm)	55 x 52 x 60 (usable width 3 cm, usable depth 11 cm, usable height 13 cm less)	55 x 52 x 60 (usable width 3 cm, usable depth 15 cm, usable height 13 cm less)	59 x 52 x 95 (usable width 2 cm, usable depth 10 cm, usable height 13 cm less)	62 x 56 x 140	62 x 76 x 131 (usable width 3 cm, usable depth 11 cm, usable height 14 cm less)	62 x 77 x 140
Exterior dimensions with door open at 90° (W x D in cm)	70 x 136	70 x 136	74 x 142	77 x 144	86 x 177	77 x 166
Drawer inner dimensions (W x D x H in cm)	50 x 34 x 10	52 x 32 x 10	54 x 37 x 10	56 x 39 x 10	59 x 56 x 22 top drawer; 59 x 62 x 22 bottom four drawers	56 x 60 x 10
Max. load: drawer	50 kg	50 kg	50 kg	50 kg	50 kg	50 kg
Weight	net 92 kg/gross 105 kg	net 100 kg/gross 110 kg	net 120 kg/gross 135 kg	net 161 kg/gross 183 kg	net 220 kg/gross 260 kg	net 202 kg/gross 237 kg
Noise emission	50.3 dB (A)	51.2 dB (A)	50.4 dB (A)	51.5 dB (A)	62.3 dB (A)	49.7 dB (A)
Automatic defrost	✓	✓	✓	✓	✓	✓
Defrost water container for manual draining	–	–	optional	optional	–	optional
Temperature deviation Δ T compliant with DIN 58375 without defrosting	1.3 °C	1.7 °C	1.47 °C/1.47 °C	1.68 °C/1.68 °C	1.77 °C	1.68 °C/1.68 °C
Re-circulating air cooling	✓	✓	✓	✓	✓	✓
Alerts in case of power failure	✓	✓	✓	✓	✓	✓
Equipped with castors	optional	optional	optional	✓	optional	✓
External housing – chrome-nickel steel 4301	–	–	–	optional	–	optional
Decorative frame	optional	optional	optional	optional	–	optional
Refrigerating machine fan, built-in	✓	✓	✓	✓	✓	✓
Refrigerating machine, water-cooled	–	–	–	optional	–	optional
LED lighting strip mounted on the roof of the interior	optional	–	optional	–	–	–
LED lighting strip mounted on the side wall of the interior	–	–	–	optional	–	optional
Adjustment gibs/variable interior arrangement	–	–	✓	✓	–	✓
Aluminium drawer with roller runners	3	–	4	5	–	5
Stainless steel drawer with roller runners	optional	3	optional	optional	5	optional
Drawer insert in a set	optional	optional	optional	optional	optional	optional
Vario Support	–	–	optional	optional	–	optional
Shelf with overlays	–	–	optional	–	–	–
Shelf with rails	–	–	optional	optional	–	optional
Wire basket with rails	–	–	optional	optional	–	optional
Aluminium sheet with rails	–	–	optional	optional	–	optional



Pharmaceutical refrigerators* and freezers

*compliant with DIN 58345 with the exception of: see page 32-35

- Safe storage of pharmaceuticals and vaccines
- Maximum ease of use
- High-performance refrigerating machine for maximum temperature stability even if the door has been opened for longer periods
- Aluminium interior container
- High energy efficiency
- Visual and audible alarm signal, even in case of power failure
- Freeze proofing
- Key switch to protect against tampering
- Easy access
- Height-adjustable drawers
- Automatic defrost

(depending on the model)



MED 100 PRO-ACTIVE



MED 340 PRO-ACTIVE



MED 520 ULTIMATE

Pharmaceutical refrigerators and freezers



ULTIMATE	–	–	–	–	–	–	MED 288 ULTIMATE*
PRO-ACTIVE	–	–	MED 100 PRO-ACTIVE	–	MED 126 PRO-ACTIVE	MED 200 PRO-ACTIVE	MED 288 PRO-ACTIVE
ESSENTIAL	ESSENTIAL MED 85	ESSENTIAL MED 85 DIN	ESSENTIAL 100	ESSENTIAL MED 125	–	–	ESSENTIAL 280
PC-KIT-NET	Standard on the ULTIMATE, optional on the PRO-ACTIVE, not available on the ESSENTIAL						
compliant with DIN 58345	–	✓	✓/–	✓	✓	✓	✓/✓/–
Capacity	80 l	80 l	95 l	120 l	120 l	170 l	280 l
Temperature setting	approx. +2 to +12 °C	approx. +2 to +15 °C	approx. +2 to +15 °C	approx. +2 to +15 °C	approx. +2 to +15 °C	approx. +2 to +15 °C	approx. +2 to +15 °C
Voltage	220 - 240 V/50 Hz	220 - 240 V/50 Hz	220 - 240 V/50 Hz	220 - 240 V/50 Hz	220 - 240 V/50 Hz	220 - 240 V/50 Hz	220 - 240 V/50 Hz
Refrigerating machine for 60 Hz operation	optional	optional	optional	optional	optional	optional	optional
Power consumption (in watts)	80	88	75/144	115	105	155	100/100/148
Normal consumption (in kWh/24 h)	0.38	0.42	0.67/0.51	0.97	0.58	0.76	0.69/0.69/0.72
Permitted ambient temperature	from +10 °C to +38 °C	from +10 °C to +38 °C	from +10 °C to +38 °C	from +10 °C to +38 °C	from +10 °C to +38 °C	from +10 °C to +38 °C	from +10 °C to +38 °C
Heat emission (max. in watts)	167	172	183/223	190	183	171	173/173/203
Exterior dimensions (incl. distance from wall and door handle) (W x D x H in cm)	47 x 51 x 74	47 x 51 x 74	54 x 54 x 82	54 x 54 x 81	54 x 53.5 x 88.8	54 x 54.6 x 122	67 x 75 x 131/67 x 75 x 124/67 x 75 x 124
Interior dimensions (W x D x H in cm)	38 x 41 x 63 cm (usable depth above 5 cm, below 15 cm less)	38 x 41 x 63 cm (usable depth above 5 cm, below 15 cm less)	44 x 43 x 47 cm (usable depth 5 cm, usable width 2 cm less)	44 x 42 x 67 in cm (usable depth above 5 cm, below 15 cm less, usable width 2 cm less)	44 x 42 x 67 in cm (usable depth above 5 cm, below 15 cm less, usable width 2 cm less)	43 x 43 x 87 (usable depth 5 cm, usable width 2 cm, usable height 14 cm less)	53 x 50 x 100 (usable depth above 5 cm, below 13 cm less)
Exterior dimensions with door open at 90° (W x D in cm)	47 x 96 cm	47 x 96 cm	54 x 105.5	54 x 105.5	54 x 105.5	54 x 105	67 x 135
Drawer inner dimensions (W x D x H in cm)	34 x 32 x 5.6 cm	34 x 32 x 5.6 cm	40.8 x 32 x 5.6	40.8 x 32 x 5.6	40.8 x 32 x 5.6	38 x 34 x 6	50 x 32 x 5.6
Maximum load: drawer/shelf	9.5 kg/25 kg	9.5 kg/25 kg	13 kg/25 kg	13 kg/25 kg	13 kg/25 kg	13 kg/25 kg	16 kg/40 kg
Weight	net 32 kg/gross 38 kg	net 32 kg/gross 38 kg	net 46 kg/gross 52 kg	net 42 kg/gross 48 kg	net 47 kg/gross 57 kg	net 69 kg/gross 80 kg	net 75 kg/gross 88 kg
Noise emission (for Ecool R600a)	37 dB (A)	37 dB (A)	41 dB (A)	40 dB (A)	40 dB (A)	48 dB (A)	41 dB (A)
Automatic defrost	✓	✓	✓	✓	✓	✓	✓
Defrost water container for manual draining	optional	optional	optional	optional	optional	optional	optional
Temperature deviation Δ T compliant with DIN 58345 without defrosting	4.51 °C	1.34 °C	0.48 °C/1.5 °C	1.5 °C	1.5 °C	1.38 °C	1 °C/1 °C/2 °C
Re-circulating air cooling	–	✓	✓	✓	✓	✓	✓
Alerts in case of power failure	–	✓	✓/optional	✓	✓	✓	✓/✓/optional
Glass door with lock	–	–	optional	–	–	–	optional
Glass door	–	–	–	optional (no longer DIN 58345-compliant)	optional (no longer DIN 58345-compliant)	–	–
Equipped with castors	optional	optional	optional	optional	optional	optional	optional
Tabletop	–	–	optional	optional	–	optional	–
Can be installed normally or under counters (observe installation drawing)	✓	✓	✓	✓	✓	✓ Only suitable for installation	–
Decorative frame	optional	optional	optional	optional	optional	optional	optional
Digital temperature display prepared for external installation into furniture front	–	optional	✓	optional	✓	✓	–
Door coupling fitting	optional	optional	optional	optional	optional	optional	optional
Refrigerating machine fan, built-in	optional	optional	✓	optional	optional	✓	optional
Refrigerating machine, water-cooled	–	–	–	–	–	–	–
LED lighting strip mounted on the roof of the interior	–	–	optional	optional	optional	optional	optional
Plastic drawer incl. drawer insert	3	3	3/–	3	3	–	–
Plastic drawer with roller runners + drawer insert	–	–	–	–	–	4	5/5/–
Vario Support	–	–	–	–	–	–	optional
Additional length / cross dividers	optional	optional	optional	optional	optional	optional	optional
Top drawer is lockable	optional	optional	–	optional	optional	–	optional
Shelf	1	1	1/2	1	1	–	–
Shelf with overlays	–	–	–	–	–	1	optional/optional/3
Shelf with rails	–	–	–	–	–	–	optional

Pharmaceutical refrigerators and freezers



ULTIMATE	MED 340 ULTIMATE*	MED 468 ULTIMATE*	MED 520 ULTIMATE	–	MED 720 ULTIMATE	–	–
PRO-ACTIVE	MED 340 PRO-ACTIVE	MED 468 PRO-ACTIVE	MED 520 PRO-ACTIVE	MED 600 PRO-ACTIVE	MED 720 PRO-ACTIVE	–	FROSTER MED 95 PRO-ACTIVE
ESSENTIAL	–	ESSENTIAL 460	–	–	ESSENTIAL 700	ESSENTIAL FROSTER 70	–
PC-KIT-NET	Standard on the ULTIMATE, optional on the PRO-ACTIVE, not available on the ESSENTIAL						
compliant with DIN 58345	✓	✓/✓/–	✓	✓	✓/✓/–	–	–
Capacity	330 l	460 l	500 l	600 l	700 l	70 l	95 l
Temperature setting	approx. +2 to +15 °C	approx. +2 to +15 °C	approx. +2 to +15 °C	approx. +2 to +15 °C	approx. +2 to +15 °C	approx. -15 to -22 °C	approx. -5 to -25 °C
Voltage	220 - 240 V/50 Hz	220 - 240 V/50 Hz	220 - 240 V/50 Hz	220 - 240 V/50 Hz	220 - 240 V/50 Hz	220 - 240 V/50 Hz	220 - 240 V/50 Hz
Refrigerating machine for 60 Hz operation	optional	optional	optional	optional	optional	optional	optional
Power consumption (in watts)	108	190/190/185	260	340	250/250/285	100	123
Normal consumption (in kWh/24 h)	0.82	0.91/0.91/0.87	1.5	3.20	1.55/1.55/1.56	1.98	1.33
Permitted ambient temperature	from +10 °C to +38 °C	from +10 °C to +38 °C	from +10 °C to +38 °C	from +10 °C to +38 °C	from +10 °C to +38 °C	from +10 °C to +32 °C	from +10 °C to +32 °C
Heat emission (max. in watts)	165	293/293/250	560	447	533/533/577	129	162
Overall dimensions (including distance from wall and door handle) (W x D x H in cm)	67 x 68 x 188/67 x 68 x 181	74 x 79.5 x 188/74 x 79.5 x 181/74 x 79.5 x 181	77 x 76 x 195.5	51 x 100 x 212 - 215	77 x 98 x 195.5	47 x 51 x 74	54 x 54 x 82
Interior dimensions (W x D x H in cm)	53 x 45 x 128 (usable depth 5 cm less)	60 x 57 x 128 (usable depth 5 cm less)	60 x 57 x 140 (usable depth 10 cm less)	39 x 90 x 160 (usable depth 12 cm less)	62 x 77 x 140 (usable width 2 cm, usable depth 11 cm, usable height 13 cm less)	35 x 41 x 55 (usable depth above 9 cm, below 20 cm less)	44 x 42 x 47 (usable depth 5 cm, usable height 2 cm less)
Exterior dimensions with door open at 90° (W x D in cm)	67 x 126	74 x 144	77 x 144	51 x 164 (with drawers open)	77 x 165	47 x 96	54 x 105.5
Drawer/shelf inner dimensions (W x D x H in cm)	50 x 32 x 5.6/–	57 x 43 x 5.6/–	57 x 39 x 5.6/–	(2x) 33 x 33.6 x 7/–	57 x 60 x 6/–	–/35 x 31 cm above, 35 x 20 cm below	40.8 x 32 x 5.6/43 x 36 cm
Maximum load: drawer/shelf	16 kg/40 kg	24 kg/40 kg	24 kg/40 kg	22 kg/–	24 kg/40 kg	–/25 kg	13 kg/25 kg
Weight	net 100 kg/gross 113 kg	net 130 kg/gross 143 kg	net 120 kg/gross 174 kg	net 170 kg/gross 200 kg	net 145 kg, gross 180 kg	net 35 kg/gross 39 kg	net 50 kg/gross 54 kg
Noise emission (for Ecoool R600a)	39 dB (A)	40 dB (A)	42 dB (A)	42 dB (A)	42 dB (A)	39.9 dB (A)	38 dB (A)
Automatic defrost	✓	✓	✓	✓	✓	–	–
Defrost water container for manual draining	optional	optional	optional	–	optional	–	✓
Temperature deviation Δ T compliant with DIN 58345 without defrosting	1.75 °C/1.75 °C	1.5 °C/1.5 °C/2.17 °C	1.6 °C/1.6 °C	3.13 °C	1.8 °C/1.8 °C/2.5 °C	3.3 °C	1,6 °C
Re-circulating air cooling	✓	✓	✓	✓	✓	–	–
Alerts in case of power failure	✓	✓/✓/optional	✓	✓	✓/✓/optional	–	✓
Glass door with lock	optional	optional	optional	–	optional	–	–
Equipped with castors	optional	optional	✓	–	✓	optional	optional
External housing - chrome-nickel steel 4301	–	–	optional	–	optional	–	–
Tabletop	–	–	–	–	–	–	optional
Can be installed normally or under counters (observe installation drawing)	–	–	–	–	–	✓	✓
Decorative frame	optional	optional	optional	optional	optional	optional	optional
Digital temperature display prepared for external installation into furniture front	–	–	–	✓	–	–	✓
Door coupling fitting	optional	optional	optional	optional	optional	optional	optional
Refrigerating machine fan, built-in	optional	✓	✓	✓	✓	optional	✓
Refrigerating machine, water-cooled	–	–	optional	–	optional	–	–
LED lighting strip mounted on the side wall of the interior	optional	optional	optional	–	optional	–	–
Plastic drawer incl. drawer insert	–	–	–	–	–	–	1
Plastic drawer with roller runners + drawer insert	9	10/10/–	12	12	12/12/– with aluminium drawers	–	–
Additional length / cross dividers	optional	optional	optional	optional	optional	–	optional
Top drawer is lockable	optional	optional	optional	–	–	–	–
Vario Support	optional	optional	optional	–	optional	–	–
Shelf	–	–	–	–	–	4	2
Shelf with overlays	optional	optional/optional/4	optional	–	optional/optional/5	–	–
Shelf with rails	optional	optional	optional	–	optional	–	–
Wire basket with rails	–	optional	optional	–	optional	–	–
Aluminium sheet with rails	–	optional	optional	–	optional	–	–



Laboratory refrigerators* and freezers

*compliant with DIN 13221 with exception of:
see page 38-41

- Temperature stability and uniform temperature distribution in the interior
- Safety device to protect against sub-zero temperatures
- Automatic defrost and defrost water evaporation
- Height-adjustable shelves
- Re-circulating air cooling
- Low-noise compressor

(depending on the model)



LABO 100 PRO-ACTIVE



LABO 340 PRO-ACTIVE



LABO 720 CHROMAT
ULTIMATE



Laboratory refrigerators



ULTIMATE	–	–	–	–	LABO 288 ULTIMATE*	LABO 340 ULTIMATE*	LABO 468 ULTIMATE*
PRO-ACTIVE	–	LABO 100 PRO-ACTIVE	–	LABO 126 PRO-ACTIVE	LABO 288 PRO-ACTIVE	LABO 340 PRO-ACTIVE	LABO 468 PRO-ACTIVE
ESSENTIAL	ESSENTIAL LABO 85	ESSENTIAL 100	ESSENTIAL 125	–	ESSENTIAL 280	–	ESSENTIAL 460
PC-KIT-NET	Standard on the ULTIMATE, optional on the PRO-ACTIVE, not available on the ESSENTIAL						
compliant with DIN 13221	–	✓/–	–	✓	✓/✓/–	✓	✓/✓/–
Capacity	80 l	95 l	120 l	120 l	280 l	330 l	460 l
Temperature setting	approx. +2 to +12 °C	approx. +2 to +15 °C	approx. +2 to +15 °C	approx. +2 to +15 °C	approx. 0 to +15 °C	approx. 0 to +15 °C	approx. 0 to +15 °C
Voltage	220 - 240 V/50 Hz	220 - 240 V/50 Hz	220 - 240 V/50 Hz	220 - 240 V/50 Hz	220 - 240 V/50 Hz	220 - 240 V/50 Hz	220 - 240 V/50 Hz
Refrigerating machine for 60 Hz operation	optional	optional	optional	optional	optional	optional	optional
Power consumption (in watts)	100	76/144	125	105	88/88/148	110	170/170/185
Normal consumption (in kWh/24 h)	0.60	0.64/0.51	0.55	0.58	0.68/0.68/0.72	0.65	1.00/1.00/0.87
Permitted ambient temperature	from +10 °C to +38 °C	from +10 °C to +38 °C	from +10 °C to +38 °C	from +10 °C to +38 °C	from +10 °C to +38 °C	from +10 °C to +38 °C	from +10 °C to +38 °C
Heat emission (max. in watts)	107	184/223	123	183	165/165/200	166	280/280/250
Overall dimensions (including distance from wall and door handle) (W x D x H in cm)	47 x 51 x 74	54 x 54 x 82	54 x 53.5 x 81	54 x 53.5 x 88.8	67 x 75 x 131/67 x 75 x 124/67 x 75 x 124	67 x 69 x 188/67 x 69 x 181	74 x 80 x 188/74 x 80 x 181/74 x 80 x 181
Interior dimensions (W x D x H in cm)	38 x 41 x 63 cm (usable depth above 5 cm, below 15 cm less)	44 x 43 x 47 (usable depth 5 cm, usable width 2 cm less)	44 x 42 x 67 (usable depth above 5 cm, below 15 cm, usable width 2 cm less)	44 x 42 x 67 (usable depth above 5 cm, below 15 cm, usable width 2 cm less)	53 x 50 x 100 (usable depth above 5 cm, below 13 cm less)	53 x 45 x 128 (usable depth 5 cm less)	60 x 57 x 128 (usable depth 5 cm less)
Exterior dimensions with door open at 90° (W x D in cm)	47 x 96 cm	54 x 106	54 x 106	54 x 106	67 x 135	67 x 127	74 x 144
Drawer/shelf inner dimensions (W x D x H in cm)	34 x 32 x 5.6/23 x 37 or 34 x 37	40 x 32 x 5.6/43 x 36	–/43 x 33	–/43 x 33	–/52 x 39	50.4 x 32 x 5.6/53 x 39	–/59 x 50
Maximum load: drawer/shelf	9.5 kg/25 kg	13 kg/25 kg	13 kg/25 kg	13 kg/25 kg	16 kg/40 kg	16 kg/40 kg	24 kg/40 kg
Weight	net 31 kg/gross 37 kg	net 46 kg/gross 50 kg	net 42 kg/gross 44 kg	net 47 kg/gross 57 kg	net 78 kg/gross 85 kg	net 88 kg/gross 100 kg	net 109 kg/gross 122 kg
Noise emission (for Ecoool R600a)	37.4 dB (A)	41 dB (A)	41.4 dB (A)	40 dB (A)	41 dB (A)	39 dB (A)	41 dB (A)
Automatic defrost	✓	✓	✓	✓	✓	✓	✓
Defrost water container for manual draining	optional	optional	optional	optional	optional	optional	optional
Temperature deviation Δ T compliant with DIN 13221 without defrosting	5.31 °C	1.76 °C/1.5 °C	2.25 °C	1.5 °C	1.01 °C/1.01 °C/2 °C	0.5 °C/0.5 °C	1 °C/1 °C/2.17 °C
Re-circulating air cooling	–	✓	–	✓	✓	✓	✓
Alerts in case of power failure	–	✓/optional	–	✓	✓/✓/optional	✓	✓/✓/optional
Glass door with lock/glass door	–	optional/–	–/optional	–/optional	optional/–	optional/–	optional/–
Equipped with castors	optional	optional	optional	optional	optional	optional	optional
External housing - chrome-nickel steel 4301	–	–	–	–	–	–	–
Tabletop	–	optional	optional	–	–	–	–
Can be installed normally or under counters	✓	✓	✓	✓	–	–	–
Digital temperature display prepared for external installation into furniture front	–	✓	optional	✓	–	–	–
Door coupling fitting/decorative frame	optional	optional	optional	optional	optional	optional	optional
Refrigerating machine fan, built-in	optional	✓	optional	optional	optional	optional	✓
Refrigerating machine, water-cooled	–	–	–	–	–	–	–
LED lighting strip mounted on the roof of the interior	–	optional	optional	optional	optional	–	–
LED lighting strip mounted on the side wall of the interior	–	–	–	–	–	optional	optional
Flexible equipment is possible	✓	✓	✓	✓	✓	✓	✓
Plastic drawer	1	optional	optional	optional	–	–	–
Plastic drawer with roller runners	–	–	–	–	optional	1 standard/optionally up to 12	optional
Aluminium drawer with roller runners	–	–	–	–	optional	optional	–
Stainless steel drawer with roller runners	–	–	–	–	optional	–	–
Vario Support	–	–	–	–	optional	optional	optional
Shelf	2	2	2	2	–	–	–
Shelf with overlays	–	–	–	–	3	4	4
Shelf with rails	–	–	–	–	optional	optional	optional
Wire basket with rails	–	–	–	–	–	–	optional
Aluminium sheet with rails	–	–	–	–	–	optional	optional

Laboratory refrigerators and freezers



ULTIMATE	LABO 520 ULTIMATE	LABO 720 ULTIMATE	LABO 720 CHROMAT ULTIMATE	FROSTER LABO 330 ULTIMATE*	FROSTER LABO 530 ULTIMATE	FROSTER LABO 730 ULTIMATE
PRO-ACTIVE	LABO 520 PRO-ACTIVE	LABO 720 PRO-ACTIVE	LABO 720 CHROMAT PRO-ACTIVE	FROSTER LABO 330 PRO-ACTIVE	FROSTER LABO 530 PRO-ACTIVE	FROSTER LABO 730 PRO-ACTIVE
ESSENTIAL	–	ESSENTIAL 700	–	–	–	–
PC-KIT-NET	Standard on the ULTIMATE, optional on the PRO-ACTIVE, not available on the ESSENTIAL					
compliant with DIN 13221	✓	✓/✓/–	✓	–	–	–
Capacity	500 l	700 l	700 l	300 l	500 l	700 l
Temperature setting	approx. 0 to +15 °C	approx. 0 to +15 °C	approx. +4 to +15 °C	approx. -10 to -30 °C	approx. -10 to -30 °C	approx. -10 to -30 °C
Voltage	220 - 240 V/50 Hz	220 - 240 V/50 Hz	220 - 240 V/50 Hz	220 - 240 V/50 Hz	220 - 240 V/50 Hz	220 - 240 V/50 Hz
Refrigerating machine for 60 Hz operation	optional	optional	optional	optional	optional	optional
Power consumption (in watts)	250	250/250/285	250	590	605	605
Normal consumption (in kWh/24 h)	1.40	1.46/1.46/1.56	1.63	3.69	7.22	7.51
Permitted ambient temperature	from +10 °C to +38 °C	from +10 °C to +38 °C	from +10 °C to +38 °C	from +10 °C to +32 °C	from +10 °C to +32 °C	from +10 °C to +32 °C
Heat emission (max. in watts)	553	553/553/577	553	693	753	753
Exterior dimensions (incl. distance from wall and door handle) (W x D x H in cm)	77 x 76 x 195.5	77 x 98 x 195.5	77 x 98 x 195.5	74 x 77 x 166/74 x 77 x 159	77 x 76 x 195.5	77 x 97 x 195.5
Interior dimensions (W x D x H in cm)	62 x 57 x 140 (usable depth 11 cm, usable height 13 cm, usable width 2 cm less)	62 x 77 x 140 (usable depth 11 cm, usable height 13 cm, usable width 2 cm less)	62 x 77 x 140 (usable depth 11 cm, usable height 13 cm, usable width 2 cm less)	59.5 x 53 x 95 (usable depth 10 cm, usable height 13 cm, usable width 2 cm less)	60 x 57 x 140 (usable depth 11 cm, usable height 13 cm, usable width 2 cm less)	62 x 77 x 140 (usable depth 11 cm, usable height 13 cm, usable width 2 cm less)
Exterior dimensions with door open at 90° (W x D in cm)	74 x 144	77 x 165	77 x 165	74 x 141	77 x 144	77 x 165
Shelf inner dimensions (W x T in cm)	59 x 45	59 x 65	59 x 65	57 x 42	59 x 45	59 x 65
Maximum load: shelf	40 kg	40 kg	40 kg	40 kg	40 kg	40 kg
Weight	net 120 kg/gross 148 kg	net 145 kg/gross 174 kg	net 145 kg/gross 174 kg	net 127 kg/gross 142 kg	net 140 kg/gross 183 kg	net 165 kg/gross 200 kg
Noise emission (for Ecoool R600a in refrigerators)	42 dB (A)	42 dB (A)	42 dB (A)	51.2 dB (A)	53 dB (A)	53 dB (A)
Automatic defrost	✓	✓	✓	✓	✓	✓
Defrost water container for manual draining	optional	optional	optional	optional	optional	optional
Temperature deviation Δ T compliant with DIN 13221 without defrosting	1 °C/1 °C	1 °C/1 °C/2.5 °C	1.1 °C/1.1 °C	1.96 °C/1.96 °C	2.5 °C/2.5 °C	2.7 °C/2.7 °C
Re-circulating air cooling	✓	✓	✓	✓	✓	✓
Alerts in case of power failure	✓	✓/✓/optional	✓	✓	✓	✓
Glass door with lock	optional	optional	✓	–	–	–
Equipped with castors	✓	✓	✓	optional	✓	✓
External housing – chrome-nickel steel 4301	optional	optional	optional	–	optional	optional
Decorative frame	optional	optional	–	optional	optional	optional
Door coupling fitting	optional	optional	–	–	–	–
Refrigerating machine fan, built-in	✓	✓	✓	✓	✓	✓
Refrigerating machine, water-cooled	optional	optional	optional	–	optional	optional
LED lighting strip mounted on the roof of the interior	–	–	–	optional	–	–
LED lighting strip mounted on the side wall of the interior	optional	optional	✓	–	optional	optional
Flexible equipment is possible	✓	✓	✓	✓	✓	✓
Plastic drawer with roller runners	optional	–	–	–	optional	–
Aluminium drawer with roller runners	optional	optional	optional	optional	optional	optional
Stainless steel drawer with roller runners	optional	optional	optional	optional	optional	optional
Vario Support	optional	optional	optional	optional	optional	optional
Shelf with overlays	5	5	5	4	5	5
Shelf with rails	optional	optional	optional	optional	optional	optional
Wire basket with rails	optional	optional	optional	optional	optional	optional
Aluminium sheet with rails	optional	optional	optional	–	optional	optional



Display at eye-level

The display is positioned at eye-level to make it easier to read and use.



Easy access

The well thought-out opening mechanism makes it even simpler to equip our devices.



Self-closing door

Doors that are “open by accident” are a thing of the past.

*On request





Explosion protection

All LABEX® models are specifically designed for storing explosive substances with maximum temperature stability. The interiors are tested by TÜV SÜD to guarantee that they are free of ignition sources in compliance with the ATEX Directive 2014/34/EU:

- All of the electrical equipment and components used in the interior (fans, temperature sensors, etc.) are specifically designed for use in zone 2.
- We also guarantee you maximum temperature stability in explosion-proof interiors.
- Intrinsically safe supply to the temperature sensors in the interior
- Explosion-proof blower
- Special earthing concept for discharging electrical potential
- Plastic parts in the interior have an antistatic design

(depending on the model)



LABEX 288 PRO-ACTIVE



LABEX 340 PRO-ACTIVE



LABEX 720 ULTIMATE

Laboratory refrigerators with an explosion-proof interior



ULTIMATE	–	–	LABEX 288 ULTIMATE*	LABEX 340 ULTIMATE*	LABEX 468 ULTIMATE*	LABEX 520 ULTIMATE	LABEX 720 ULTIMATE
PRO-ACTIVE	LABEX 105 PRO-ACTIVE	–	LABEX 288 PRO-ACTIVE	LABEX 340 PRO-ACTIVE	LABEX 468 PRO-ACTIVE	LABEX 520 PRO-ACTIVE	LABEX 720 PRO-ACTIVE
ESSENTIAL	–	ESSENTIAL LABEX 125	–	–	–	–	–
PC-KIT-NET	Standard on the ULTIMATE, optional on the PRO-ACTIVE, not available on the ESSENTIAL						
compliant with DIN 13221	–	–	✓	✓	✓	✓	✓
Capacity	95 l	120 l	280 l	330 l	460 l	500 l	700 l
Temperature setting	approx. +2 to +15 °C	approx. +2 to +12 °C	approx. 0 to +15 °C	approx. 0 to +15 °C	approx. 0 to +15 °C	approx. 0 to +15 °C	approx. 0 to +15 °C
Voltage	220 - 240 V/50 Hz	220 - 240 V/50 Hz	220 - 240 V/50 Hz	220 - 240 V/50 Hz	220 - 240 V/50 Hz	220 - 240 V/50 Hz	220 - 240 V/50 Hz
Refrigerating machine for 60 Hz operation	optional	optional	optional	optional	optional	optional	optional
Power consumption (in watts)	86	115	100	128	170	234	237
Normal consumption (in kWh/24 h)	0.43	0.68	0.76	1.14	1.03	1.2	1.23
Permitted ambient temperature	from +10 °C to +38 °C	from +10 °C to +38 °C	from +10 °C to +38 °C	from +10 °C to +38 °C	from +10 °C to +38 °C	from +10 °C to +38 °C	from +10 °C to +38 °C
Heat emission (max. in watts)	191	130	173	178	280	543	545
Exterior dimensions (incl. distance from wall and door handle) (W x D x H in cm)	54 x 54 x 82	54 x 54 x 81	67 x 75 x 131/67 x 75 x 124	67 x 69 x 188/67 x 69 x 181	74 x 80 x 188/74 x 80 x 181	77 x 76 x 195.5	77 x 98 x 195.5
Interior dimensions (W x D x H in cm)	44 x 43 x 47 (usable depth 5 cm, usable width 2 cm less)	44 x 42 x 67 (usable depth above 5 cm, below 15 cm, usable width 2 cm less)	53 x 50 x 100 (usable depth above 9 cm, below 13 cm less)	53 x 45 x 128 (usable depth 5 cm less)	60 x 57 x 128 (usable depth 5 cm less)	60 x 57 x 140 (usable depth 11 cm, usable width 2 cm, usable height 13 cm less)	60 x 77 x 140 (usable depth 11 cm, usable width 2 cm, usable height 13 cm less)
Exterior dimensions with door open at 90° (W x D in cm)	54 x 106 cm	54 x 106 cm	67 x 135	67 x 127	74 x 144	77 x 144	77 x 165
Drawer/shelf inner dimensions (W x D x H in cm)	40 x 32 x 5.6/ 43 x 36	40 x 32 x 5.6/ 43 x 24 below, 43 x 33 above	50.4 x 32 x 5.6/ 52.7 x 39	50.4 x 32 x 5.6/ 52.7 x 39	57 x 43 x 5.6/ 59 x 50	59 x 45	59 x 65
Maximum load: drawer/shelf	13 kg/25 kg	13 kg/25 kg	16 kg/40 kg	16 kg/40 kg	24 kg/40 kg	24 kg/40 kg	–/40 kg
Weight	net 46 kg, gross 50 kg	net 42 kg, gross 44 kg	net 72 kg/gross 85 kg	net 93 kg/gross 105 kg	net 112 kg/gross 125 kg	net 120 kg/gross 148 kg	net 145 kg/gross 174 kg
Noise emission (for Ecool R600a)	41 dB (A)	40 dB (A)	40 dB (A)	40 dB (A)	40 dB (A)	41 dB (A)	42 dB (A)
Automatic defrost	✓	–	✓	✓	✓	✓	✓
Defrost water container for manual draining	✓	✓	✓	✓	✓	✓	✓
Temperature deviation Δ T compliant with DIN 13221 without defrosting	5.71 °C	2.26 °C	0.74 °C/0.74 °C	2.6 °C/2.6 °C	1 °C/1 °C	0.9 °C/0.9 °C	1 °C/1 °C
Re-circulating air cooling	–	–	✓	✓	✓	✓	✓
Alerts in case of power failure	✓	–	✓	✓	✓	✓	✓
Glass door with lock	optional	–	optional	optional	optional	optional	optional
Glass door	–	optional	–	–	–	–	–
Equipped with castors	optional	optional	optional	optional	optional	✓	✓
External housing – chrome-nickel steel 4301	–	–	–	–	–	optional	optional
Tabletop	optional	optional	–	–	–	–	–
Can be installed normally or under counters	✓	✓	–	–	–	–	–
Decorative frame	optional	optional	optional	optional	optional	optional	optional
Door coupling fitting	optional	optional	optional	optional	optional	optional	optional
Refrigerating machine fan, built-in	✓	optional	optional	optional	✓	✓	✓
Refrigerating machine, water-cooled	–	–	–	–	–	optional	optional
Flexible equipment is possible	✓	✓	✓	✓	✓	✓	✓
Plastic drawer	1	1	–	–	–	–	–
Plastic drawer with roller runners, conductive	–	–	1	2	optional	optional	–
Shelf	2	2	–	–	–	–	–
Shelf with overlays	–	–	3	4	6	5	5
Shelf with rails	–	–	optional	optional	optional	optional	optional

Laboratory freezers with an explosion-proof interior

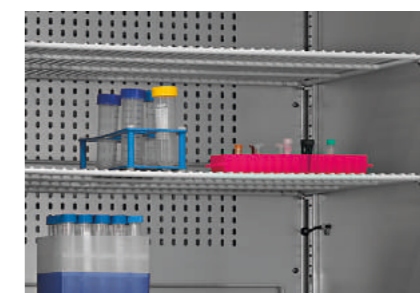


ULTIMATE	–	–	FROSTER LABEX 330 ULTIMATE*	FROSTER LABEX 530 ULTIMATE	FROSTER LABEX 730 ULTIMATE
PRO-ACTIVE	–	FROSTER LABEX 96 PRO-ACTIVE	FROSTER LABEX 330 PRO-ACTIVE	FROSTER LABEX 530 PRO-ACTIVE	FROSTER LABEX 730 PRO-ACTIVE
ESSENTIAL	ESSENTIAL FROSTER LABEX 71	–	–	–	–
PC-KIT-NET	Standard on the ULTIMATE, optional on the PRO-ACTIVE, not available on the ESSENTIAL				
Capacity	70 l	95 l	300 l	500 l	700 l
Temperature setting	approx. -15 °C to -22 °C	approx. -5 °C to -25 °C	approx. -10 to -30 °C	approx. -10 to -30 °C	approx. -10 to -30 °C
Voltage	220 - 240 V/50 Hz	220 - 240 V/50 Hz	220 - 240 V/50 Hz	220 - 240 V/50 Hz	220 - 240 V/50 Hz
Refrigerating machine for 60 Hz operation	optional	optional	optional	optional	optional
Power consumption (in watts)	100	119	540	550	550
Normal consumption (in kWh/24 h)	1.6	1.36	4.33	5.8	6.02
Permitted ambient temperature	from +10 °C to +32 °C	from +10 °C to +32 °C	from +10 °C to +32 °C	from +10 °C to +32 °C	from +10 °C to +32 °C
Heat emission (max. in watts)	129	159	660	717	706
Exterior dimensions (incl. distance from wall and door handle) (W x D x H in cm)	47 x 51 x 74	54 x 54 x 82	74 x 78 x 166/74 x 78 x 159	77 x 76 x 195.5	77 x 98 x 195.5
Interior dimensions (W x D x H in cm)	35 x 41 x 55 (usable depth above 9 cm, below 20 cm less)	44 x 42 x 47 (usable depth 5 cm, usable width 2 cm less)	59 x 52 x 95 (usable width 2 cm, usable depth 10 cm, usable height 13 cm less)	62 x 57 x 140 (usable width 2 cm, usable depth 11 cm, usable height 13 cm less)	62 x 77 x 140 (usable width 2 cm, usable depth 11 cm, usable height 13 cm less)
Exterior dimensions with door open at 90° (W x D in cm)	47 x 96	54 x 106	74 x 142	77 x 144	77 x 166
Shelf (W x D in cm)	35 x 20 (below), 35 x 31 (above)	43 x 36	57 x 42	59 x 45	59 x 65
Maximum load: drawer/shelf	–/25 kg	13 kg/25 kg	–/40 kg	24 kg/40 kg	–/40 kg
Weight	net 34 kg, gross 39 kg	net 42 kg, gross 50 kg	net 127 kg/gross 142 kg	net 138 kg/gross 163 kg	net 165 kg/gross 200 kg
Noise emission	39.9 dB (A)	38 dB (A)	51.2 dB (A)	53.3 dB (A)	53.9 dB (A)
Automatic defrost	–	–	✓	✓	✓
Defrost water container for manual draining	–	✓	✓	✓	✓
Temperature deviation Δ T compliant with DIN 13221 without defrosting	3.3 °C	3 °C	1.74 °C/1.74 °C	2 °C/2 °C	2 °C/2 °C
Re-circulating air cooling	–	–	✓	✓	✓
Alerts in case of power failure	–	✓	✓	✓	✓
Equipped with castors	optional	optional	optional	✓	✓
External housing – chrome-nickel steel 4301	–	–	–	optional	optional
Tabletop	–	optional	–	–	–
Can be installed normally or under counters	✓	✓	–	–	–
Door coupling fitting	optional	optional	–	–	–
Decorative frame	optional	optional	optional	optional	optional
Digital temperature display prepared for external installation into furniture front	–	✓	–	–	–
Refrigerating machine fan, built-in	optional	✓	✓	✓	✓
Refrigerating machine, water-cooled	–	–	–	optional	optional
Flexible equipment is possible	–	✓	✓	✓	✓
Plastic drawer	–	optional	–	–	–
Plastic drawer with roller runners, conductive	–	–	–	optional	–
Shelf	4	2	–	–	–
Shelf with overlays	–	–	4	5	5
Shelf with rails	–	–	optional	optional	optional



Intrinsic safety

Use of conductive, height-adjustable drawers with a variable interior arrangement.**



Protected interior

A current discharge system prevents any static charges.**



High temperature precision due to the re-circulating air cooling

The axial fan used for the re-circulating air cooling is protected by means of a safety power



Explosion protection

The interior is free of ignition sources.**

*On request

**depending on the model



Temperature documentation with KIRSCH DATANET

Maximum quality assurance for your chilled goods – complete and simply reliable

Complete and reliable temperature documentation is often mandatory as part of quality assurance (e.g. for the cooling of blood and pharmaceuticals). Manual on-site data capture is time-consuming and often inaccurate. Use our solutions to deal with these tasks simply and quickly – irrespective of whether you use the KIRSCH PC-KIT or work traditionally with our mechanical thermometers. Use your time at work efficiently by leaving the documentation to our KIRSCH DATANET software.

Your benefits

Cost-effective

- Reduced costs through the automatic capture and evaluation of data
- Software is included

Easy

- Due to the use of a standard Windows® PC or server
- The reading and storage of data as well as the adjustment of the refrigerator is done from the PC*
- The recorded data can be sent by email

Flexible

- Can be retrofitted to all KIRSCH refrigerators

Safe

- Recording and evaluation of a wide range of technical values (door opening, alarm messages, etc.) even in case of power failure. Door opening log for the ULTIMATE
- Dangers are averted at an early stage through monitoring*
- Transmission of alarm messages by email*



PC-KIT-NET

Automatic temperature documentation and monitoring through the network (LAN or WiFi). Unlimited number of devices can be integrated. Simultaneous data access for up to 20 clients per server. Access with two servers is possible.



KIRSCH DATALOG

For retrofitting of the automatic temperature documentation and monitoring for devices **without an RS485 interface** and external devices. Including a minimum/maximum temperature memory and alerting.



External temperature recording

Temperature sensor that can be retrofitted for external connection to PC-supported temperature evaluation devices



Disc-type thermometer

Depending on the model, this is either installed into the machine room screen of the refrigerator or freezer or integrated with an additional housing add-on.



Pen-recording thermometer

The easiest method for retrofitting the temperature documentation.

KIRSCH DATANET software and set-up service

Complete temperature documentation, accurate data evaluation and continuous monitoring.

Minimal effort and maximum security due to:

- Automatic capture, documentation and analysis of a wide range of values from a refrigerator
- Real-time monitoring (except the PC-KIT-STICK), even from decentralised devices
- Efficient administrative structures, worldwide access and status queries when setting up remote access
- Maximum automation and security because the software can be integrated with the existing security environment of the server.
- Different access rights (administrator, user, guest)
- Automatic connection and update of the data from integrated refrigerators when starting up the software (if KIRSCH DATANET is not permanently in operation)
- Server software runs as a “Windows Service” (this is automatically launched at the start-up and runs in the background)
- Exportable data that can be easily transmitted by email or integrated with other programs
- RFID access authorisation for the ULTIMATE

Set-up service

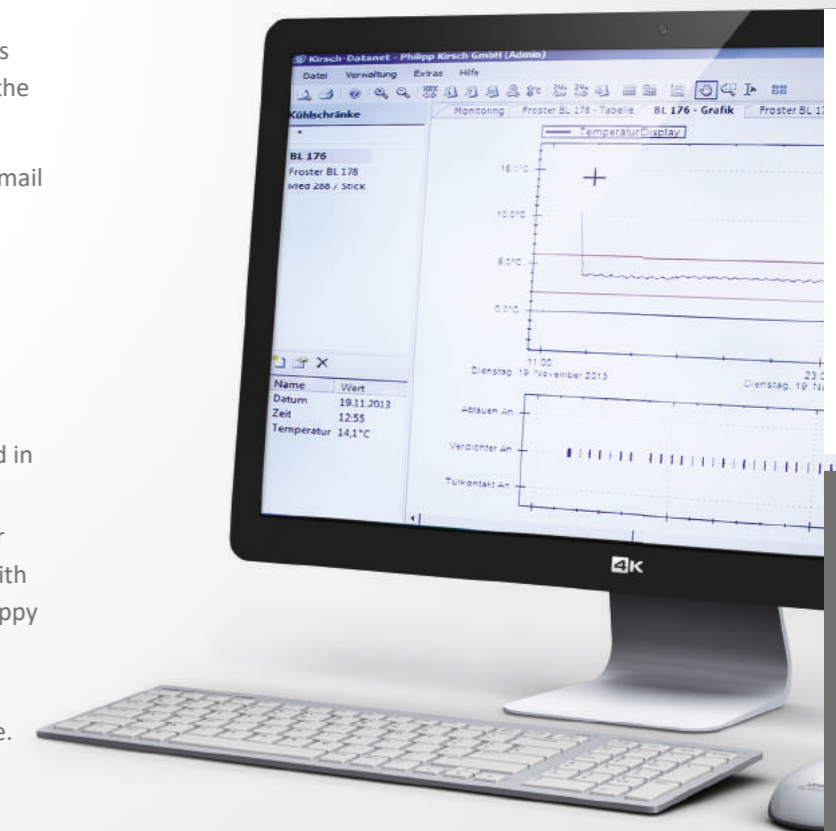
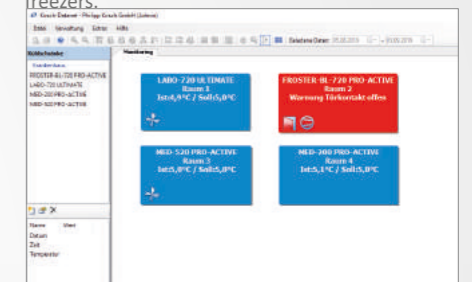
Integration with your existing network is easy. The network parameters (IP address, etc.) are entered in the control unit of the refrigerator or freezer.

If you have any questions regarding the set-up of your temperature documentation system in conjunction with our KIRSCH DATANET software solution, we will be happy to advise and assist you.

Request an appropriate quotation for the set-up of your system at temperaturdoku@kirsch-medical.de.

Zeit	Temperatur	Alarm	Door	Door	Door	Door	Door	Door	Door	Door	Door	Door	Door	Door	Door	Door	Door	Door	Door	Door	
10:00	14.1																				
10:05	14.1																				
10:10	14.1																				
10:15	14.1																				
10:20	14.1																				
10:25	14.1																				
10:30	14.1																				
10:35	14.1																				
10:40	14.1																				
10:45	14.1																				
10:50	14.1																				
10:55	14.1																				
11:00	14.1																				
11:05	14.1																				
11:10	14.1																				
11:15	14.1																				
11:20	14.1																				
11:25	14.1																				
11:30	14.1																				
11:35	14.1																				
11:40	14.1																				
11:45	14.1																				
11:50	14.1																				
11:55	14.1																				
12:00	14.1																				

The data can be displayed in different ways, at the top in the form of a list. At the bottom, real-time monitoring of the integrated refrigerators or freezers.



TEMPERATURE

*PC-KIT-NET

Accessories

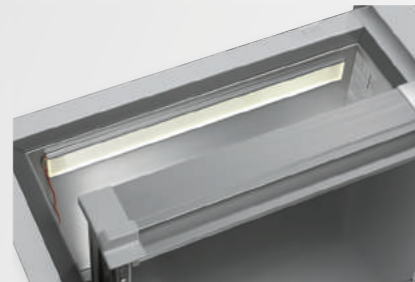
Structural options

KIRSCH refrigerators and freezers provide numerous equipment options that can be retrofitted even at the set-up location.



Glass door with lock

See clearly: avoid opening the door unnecessarily to inspect the contents. Lockable.



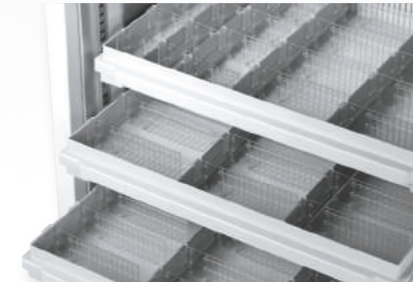
Side wall/ceiling interior lighting

Optional, optimal and energy-efficient lighting for the interior using an LED light strip.



Water-cooled refrigerating machine

For special cases, refrigerating machines with heat exchangers for cold-water connection are available for some models.



Drawers/length and cross dividers

Optimised on a model-specific basis and partially height-adjustable. The length and cross dividers are variably adjustable.



Refrigerator and freezer combination

Refrigerators and freezers can be stacked and combined one above the other with a connecting piece.



Equipped with castors

Equipped with steering and fixed castors. (depending on the model).



Defrost water containers

Transparent, for manually draining water.



Stainless steel shelves and wire shelves

Stainless steel shelves, guaranteed rust-free, and wire shelves, robust with a load capacity of up to 40 and 50 kg.

If undelivered please return to below address

Book Post



Scientific Research Instruments Company Private Limited

42-43, 2nd & 3rd Floor, 1st Cross, Gubbalala, Bengaluru - 560 061

Telephone : 080 4757 2577 | 080 4302 5791

Sales

info@srico-labworld.com

Mobile : +91 9900674407

Service

service@srico-labworld.com

Mobile : +91 9900055879

Bhubaneswar | Hyderabad | New Delhi | Navi Mumbai | Vadodara

Ahmedabad | Chandigarh | Chennai | Goa | Guwahati | Kolkata | Lucknow | Pune | Thiruvananthapuram | Visakhapatnam



www.srico-labworld.com