

METHERR

SERIES

-86 °C Dual System



MDF-86V728D



This product is specially designed and manufactured for long term storage of various biological product, including viruses, germs, erythrocytes, leucocyte and cutis. Applications can be found in blood banks, hospitals, epidemic prevention services, and research institutes, laboratories in electronic and chemical plants, bio-logical engineering institutes and marine fishery companies.

01

-86 °C Metherr Dual System



FILED PROVEN RELIABILITY

- Unique insulated inner door design for four separate storage compartments to minimize frost buildup inside the chamber.
- Specialized control system design for a well-balanced operation of dual refrigeration system.
- Positive filed proven reliability record.



SAFETY

- Malfunction alarms including high and low temperature, power failure, sensor error, clean-filter, and extremely high ambient, abnormal voltage, thermostat failure, low battery, condenser clean, door ajar.
- Capable of producing two types of alarm outputs, audible buzzer and visible flashing light.
- Door open feature standard and USB port for temperature data downloading standard on upright models.
- Remote alarm contacts.



INSTALLATION AND APPLICATION

- Wide range operating voltage system from 187V to 242V designed to allow units installed in areas with poor voltage condition
- Suitable for 10°C to 32°C ambient temperature



METHERR -86°C Dual System



ENERGY SAVING

- Unique door seal design for the minimum loss of cold temperature during a door opening.
- High performance VIP insulation panels to minimize cabinet heat gain and to improve temperature stability.



KEY DESIGN FEATURES

- Microprocessor-controlled system designed for controlled range of -40°C to -86°C for cabinet space with 1°C increment
- Settable high temperature and low temperature alarms.
- Automatic clean-filter alarm and sensor error alert.
- Adjustable storage shelf height
- Optional temperature recorder, storage racks and storage box
- Double security with two independent cooling system, when one system breakdown, the other system could maintain the inner temperature at -70°C.





2 individual inner doors can be opened independently to minimize frost buildup inside the chamber
 Unique door seal design for the minimum loss of cold temperature during a door opening
 Stainless Steel handle to ensure the door open conveniently even in the case of frost



Excellent Doors Seals
 5 gasket seal, 4 seals for out door



7 Inches touch Screen
 All data display on the screen, easy to observe

Write Board for short records which would pass to next user

Green Handle, easy to use with 2 locks

Special V.I.P (Vacuum Insulation Panel) design with extra insulation factor cuts down heat loss to cabinet by 25%



Big condenser for better heat dissipation

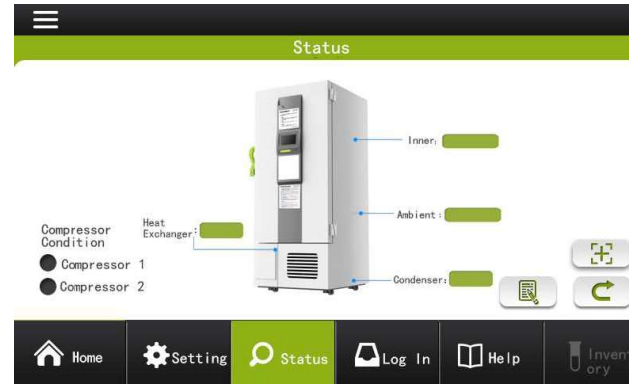


Changeable sensor box or you could put another sensor from here to monitor or record temperature

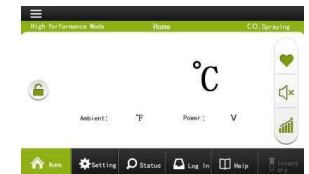


-86 °C Metherr Dual System

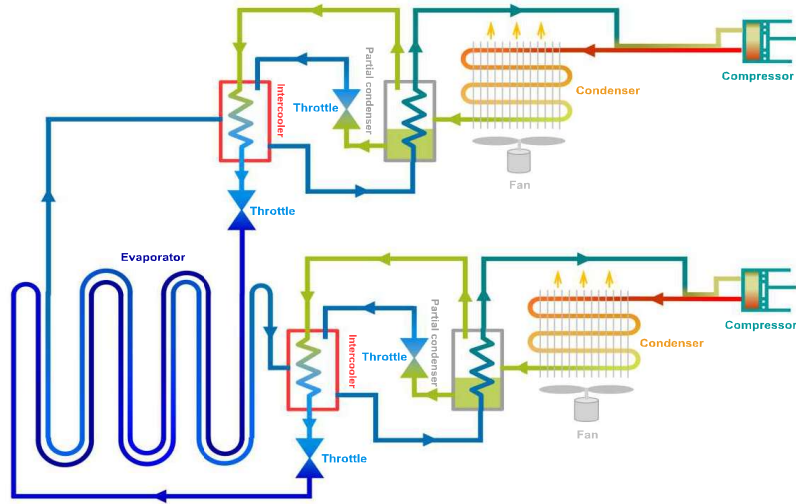
--7 Inches Touch Screen & Functions



Alarm	Alarm Triggering Condition
High Temperature	Temperature reaches the warm alarm limit
Low Temperature	Temperature reaches the low alarm limit
Power Failure	Equipment loses power
Door Ajar	Door open period exceeds 5 mins
Probe Failure	<ol style="list-style-type: none"> 1. Main cabinet temperature control sensor fails 2. Condenser sensor fails 3. Ambient sensor fails 4. Heat exchanger sensor fails 5. Heat exchanger temperature fails
Low Battery	Battery capacity runs low or battery switch is not turned on
Hot Condenser	<ol style="list-style-type: none"> 1. Condensers filter element is clogged 2. Ambient temperature is too high
High Ambient Temperature	Ambient temperature exceeds 32°C
Other alarms	<ol style="list-style-type: none"> 1. Thermostat failure 2. Abnorml voltage alarm



Dual System Circulation System

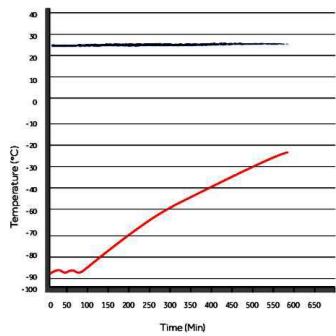


METHER SERIES

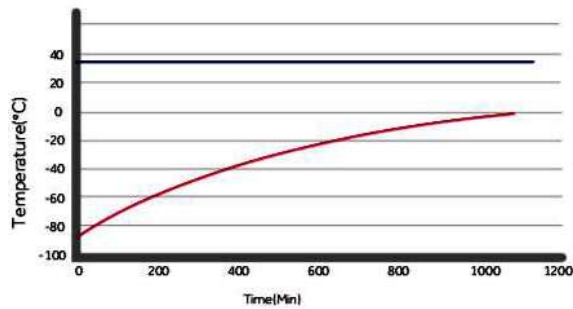
-86°C Cascade System



METHER -86°C Cascade System



Pull-up test at 25°C ambient
MDF-86V588D



Pull-up test at 32°C ambient
MDF-86V588D



-86 °C Methers Cascade System

FILED PROVEN RELIABILITY

- Unique insulated inner door design for four separate storage compartments to minimize frost buildup inside the chamber.
- Specialized control system design for a well-balanced operation of cascade refrigeration system.
- Positive filed proven reliability record.

ENERGY SAVING

- Unique door seal design for the minimum loss of cold temperature during a door opening.
- High performance VIP insulation panels to minimize cabinet heat gain and to improve temperature stability.
- HC Refrigerant with better efficiency & less energy cost, good for environment.

SAFETY

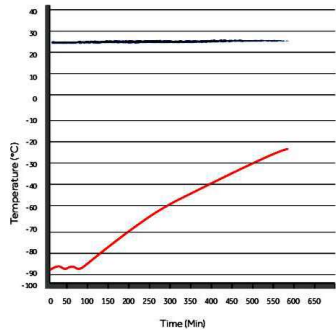
- Malfunction alarms including high and low temperature, power failure, sensor error, clean-filter, and extremely high ambient, abnormal voltage, thermostat failure, low battery, condenser clean, door ajar.
- Capable of producing two types of alarm outputs, audible buzzer and visible flashing light.
- Door open feature standard and USB port for temperature data downloading standard on upright models.
- Remote alarm contacts.

KEY DESIGN FEATURES

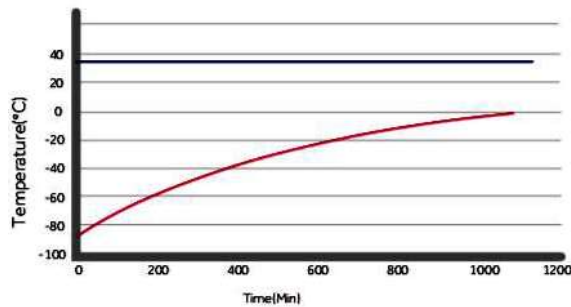
- Microprocessor-controlled system designed for controlled range of -40°C to -86°C for cabinet space with 1°C increment
- Settable high temperature and low temperature alarms.
- Automatic clean-filter alarm and sensor error alert.
- Adjustable storage shelf height
- Optional temperature recorder, storage racks and storage box

INSTALLATION AND APPLICATION

- Wide range operating voltage system from 187V to 242V designed to allow units installed in areas with poor voltage condition
- Suitable for 10°C to 32°C ambient temperature

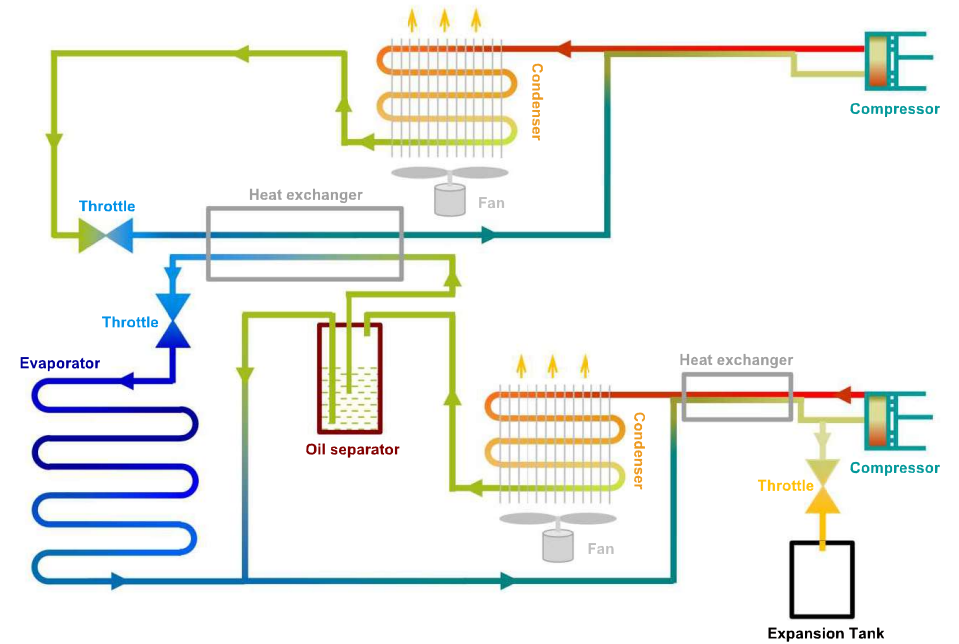


Pull-up test at 25°C ambient
MDF-86V728

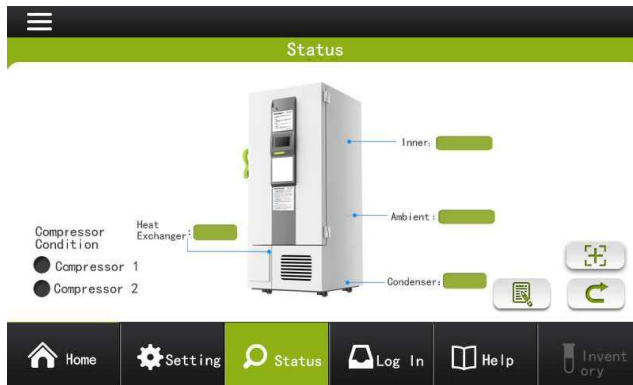


Pull-up test at 32°C ambient
MDF-86V728

Cascade System Heat Exchange Circulation



-86 °C Metherr Cascade System --7 Inches Touch Screen & Functions



Alarm	Alarm Triggering Condition
High Temperature	Temperature reaches the warm alarm limit
Low Temperature	Temperature reaches the low alarm limit
Power Failure	Equipment loses power
Door Ajar	Door open period exceeds 5 mins
Probe Failure	<ol style="list-style-type: none"> 1. Main cabinet temperature control sensor fails 2. Condenser sensor fails 3. Ambient sensor fails 4. Heat exchanger sensor fails 5. Heat exchanger temperature fails
Low Battery	Battery capacity runs low or battery switch is not turned on
Hot Condenser	<ol style="list-style-type: none"> 1. Condensers filter element is clogged 2. Ambient temperature is too high
High Ambient Temperature	Ambient temperature exceeds 32°C
Other alarms	<ol style="list-style-type: none"> 1. Thermostat failure 2. Abnormal voltage alarm





01



PROMED SERIES

-86 °C Self- Cascade System



MDF-86V728E



This product is specially designed and manufactured for long term storage of various biological product, including viruses, germs, erythrocytes, leucocytes and cutis. Applications can be found in blood banks, hospitals, epidemic prevention services, and research institutes, laboratories in electronic and chemical plants, bio-logical engineering institutes and marine fishery companies.



MDF-86V838E



MDF-86V588E



MDF-86V340E



MDF-86V188E



MDF-86V58



SAFETY

- Malfunction alarms including high and low temperature, power failure, sensor error, clean-filter, and extremely high ambient, abnormal voltage, thermostat failure, low battery, condenser clean, door ajar.
- Capable of producing two types of alarm outputs, audible buzzer and visible flashing light.
- Door open feature standard and USB port for temperature data downloading standard on upright models.
- Remote alarm contacts.



INSTALLATION AND APPLICATION

- Wide range operating voltage system from 187V to 242V designed to allow units installed in areas with poor voltage condition
- Suitable for 10°C to 32°C ambient temperature



FILED PROVEN RELIABILITY

- Unique insulated inner door design for four separate storage compartments to minimize frost buildup inside the chamber.
- Specialized control system design for a well-balanced operation of cascade refrigeration system.
- Positive filed proven reliability record.



KEY DESIGN FEATURES

- Microprocessor-controlled system designed for controlled range of -40°C to -86°C for cabinet space with 1°C increment
- Settable high temperature and low temperature alarms.
- Automatic clean-filter alarm and sensor error alert.
- Adjustable storage shelf height
- Optional temperature recorder, storage racks and storage box



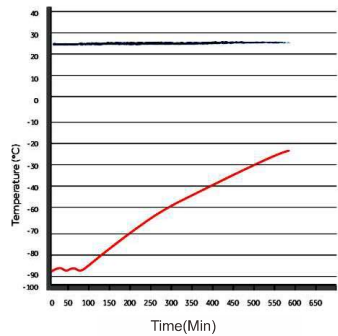
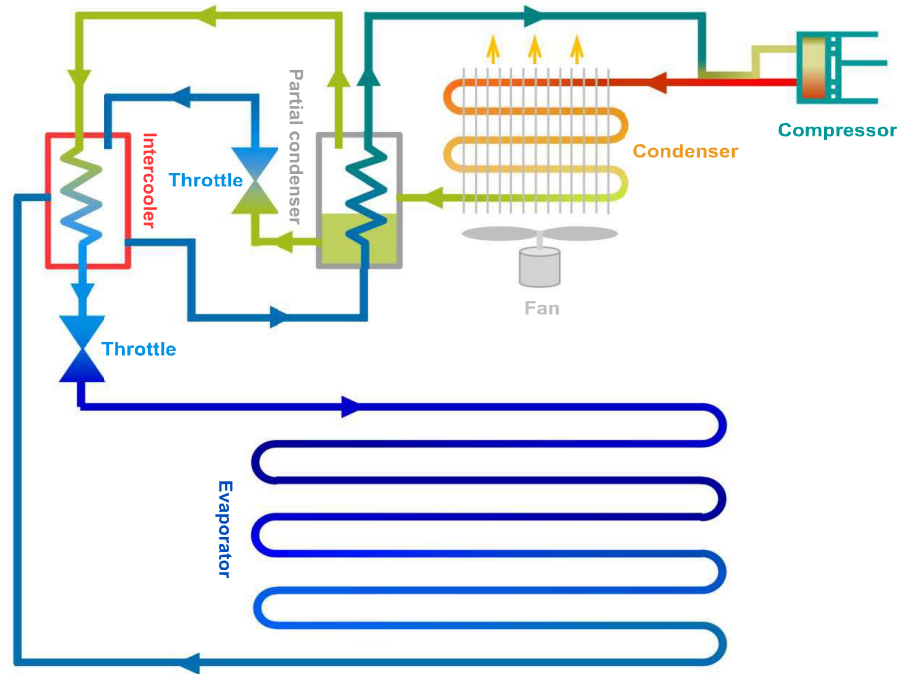
ENERGY SAVING

- Unique door seal design for the minimum loss of cold temperature during a door opening.
- High performance VIP insulation panels to minimize cabinet heat gain and to improve temperature stability.

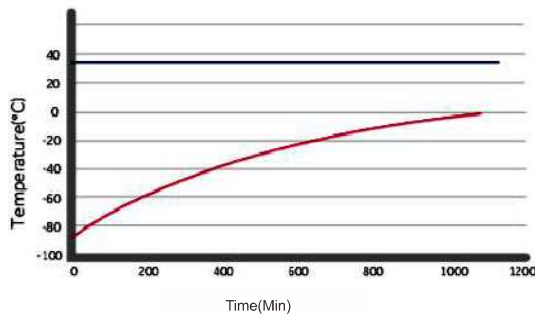


PROMED -86°C Self-Cascade System

-86 °C Self- Cascade System



Pull-up test at 25°C ambient



Pull-up test at 32°C ambient

-86 °C Self- Cascade System



3 individual inner doors can be opened independently to minimize frost buildup inside the chamber. Unique door seal design for the minimum loss of cold temperature during a door opening. Stainless Steel inner handle to ensure the door open conveniently even in the case of frost.



Excellent Doors Seals 5 gasket seal, 4 seals for out door, 1 seal for inner door which provides maximum protection against thermal intrusion

Big Door handle, easy to open

Sample port on back for temperature monitoring conveniently

Big condenser for better heat dissipation, Ambient Temperature sensor

Controller Panel with press button Alarm status shows on it, easy for attention

PROMED -86°C Self-Cascade System

-86 °C Self- Cascade System

Eye-level controls for quick and easy programming and viewing

Display for working temperature, setting temperature, high-alarming temperature, low-alarming temperature, password setting, and codes error



Audio alarm

Silencing sound alarm

Malfunction detection Visual alarm

Operating status display

Selecting function

Adjusting key

Alarm	Alarm Triggering Condition
High Temperature	Temperature reaches the warm alarm limit
Low Temperature	Temperature reaches the low alarm limit
Power Failure	Equipment loses power
Door Ajar	Door open period exceeds 5 mins
Probe Failure	<ol style="list-style-type: none"> Main cabinet temperature control sensor fails Condenser sensor fails Ambient sensor fails Heat exchanger sensor fails Heat exchanger temperature fails
Low Battery	Battery capacity runs low or battery switch is not turned on
Hot Condenser	<ol style="list-style-type: none"> Condensers filter element is clogged Ambient temperature is too high
High Ambient Temperature	Ambient temperature exceeds 32°C
Other alarms	<ol style="list-style-type: none"> Thermostat failure Abnormal voltage alarm

-86 °C Self- Cascade System



MDF-86H485

MDF-86H105



CHARACTERISTIC FUNCTION

- Safety door lock design to prevent abnormal door open
- Wide voltage for AC187V-AC242V
- Mute design for salient needed environment
- Digital display with big screen, easy to check
- Excellent thermal insulation performance with silicone door seal design (second door seal optional)
- Mobile and fixable wheel for move



BOX

- The box is made of high quality cold rolled steel plate, and the surface is treated with advance anti-corrosion phosphatic spraying process with elegant orange powder coating. High-class 304 SUS inner box, durable and reliable.



SAFETY GUARANTEE

- Temperature high/low alarm, sensor malfunction alarm, thermostat failure alarm
- Audible and visible alarm
- Keyboard lockable, password protection on pe change running parameter randomly
- Display running parameter with real-time monitoring to guarantee the stability of freezer



TEMPERATURE CONTROL MODE

- With the international famous brand computer temperature control system to keep the inner temperature accurate and stable. Temperature adjusted from -40°C--86°C
- High light digital display
- High/low temperature alarm, the alarm temperature can be set as needed
- Platinum esiance temperature sensor, sensing temperature accurately



REFRIGERATION SYSTEM

- Imported brand compressor work with CFC-Free environmental refrigerant
- High density insulation foam layer with better heat preservation effect
- Optimized self-cascade refrigeration system to provide faster cooling speed with lower power consumption

1. Medical ULT Freezer

MDF-86V838D

Temperature Range
-40°C ~ -86°C
 Capacity
838L



MDF-86V588D

Temperature Range
-40°C ~ -86°C
 Capacity
588L



Model	Volume	Exterior dimensions (W*D*H/mm)	Interior dimensions (W*D*H/mm)	Net Weight/kg	Power/W	Temp Range/°C	Compressor/NO.	Optional accessory
MDF-86V838D	838L	1160*1085*1994.5	894*718*1310	275kg	1475W	-40°C ~ -86°C	Secop/2	Data logger, CO2, LN2 back up system
MDF-86V588D	588L	872*1100*1994.5	606*738*1310	249kg	1250W	-40°C ~ -86°C	Secop/2	Data logger, CO2, LN2 back up system

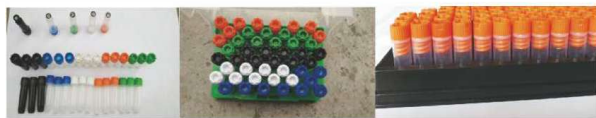
2. CONSUMABLES FOR ULT FREEZER



Two code management system to locate and monitor vials



Label Printer Batch code recognition machine



Multiple Color for multiple choice



PPT BOX 304SUS Racks

3. BIOLOGICAL SAMPLE BANKS REQUIRE CONSUMABLES

Freezer Brand	Freezer Model	Capacity(L)	Shelves	Compartments	Size of Racks(H*D)	Racks per Shelf	Racks per Freezer	Boxes Per Rack	Boxes per Freezer	Box Size(mm)	Vials per Freezer	
METHET	MDF-86V408	408	3	4	5*4	4	16	20	288	2*50	28800	
	MDF-86V408DL				4*4	4		16				
	MDF-86V588	588	3	4	5*5	4	16	25	400			
	MDF-86V588D							20+24				504
	MDF-86V728	728	3	4	5*4+6*4	6	24	20+24	504			50400
	MDF-86V838	838	3	4	5*5	6	24	25	600			60000
MDF-86V838D	25							600				
PROMED	MDF-86V188E	188	2	3	4*3	3	9	12	108	10800		
	MDF-86V340E	340	3	4	4*4	3	12	16	192	19200		
	MDF-86V408E	408	3	4	5*4	4	16	20	288	28000		
					4*4	4		16				
	MDF-86V588E	588	3	4	5*5	4	16	25	400	40000		
	MDF-86V838E	838	3	4	5*5	6	24	25	600	60000		
MDF-86H105	105	/	1	11*1+6*1	/	4	11+6	34	3400			
MDF-86H485	485	/	1	11*1+6*1	/	30	11+6	300	30000			
MDF-86V58	58	/	1	6*2	/		2	24	2400			

-86 °C ULT Freezer



	Model	MDF-86V58	MDF-86V188E	MDF-86V340E	MDF-86V408E	MDF-86V588E	MDF-86V728E	MDF-86V838E	MDF-86V338	MDF-86V408	MDF-86V588	MDF-86V728	MDF-86V838	MDF-86V408DL	MDF-86V588D	MDF-86V728D	MDF-86V838D	MDF-86H105	MDF-86H485	
Specifications	Shelf/drawer QTY	Stainless steel shelf#1	Stainless steel shelf#2	Stainless steel shelf#3	Stainless steel shelf#3	Stainless steel shelf#3	Stainless steel shelf#3	Stainless steel shelf#3	Stainless steel shelf#3	Stainless steel shelf#3	Stainless steel shelf#3	Stainless steel shelf#3	Stainless steel shelf#3	Stainless steel shelf#3	Stainless steel shelf#3	Stainless steel shelf#3	Stainless steel shelf#3	/	/	
	Cooling	Direct cooling	Direct cooling	Direct cooling	Direct cooling	Direct cooling	Direct cooling	Direct cooling	Direct cooling	Direct cooling	Direct cooling	Direct cooling	Direct cooling	Direct cooling	Direct cooling	Direct cooling	Direct cooling	Direct cooling	Direct cooling	Direct cooling
	Defrost	Manual	Manual	Manual	Manual	Manual	Manual	Manual	Manual	Manual	Manual	Manual	Manual	Manual	Manual	Manual	Manual	Manual	Manual	Manual
	Refrigerant	Mixed-gas	Mixed-gas	Mixed-gas	Mixed-gas	Mixed-gas	Mixed-gas	Mixed-gas	Mixed-gas	HC	HC	HC	HC	Mixed-gas	Mixed-gas	Mixed-gas	Mixed-gas	Mixed-gas	Mixed-gas	Mixed-gas
Cooling system	Power Consumption(kWh/24h)	5,8	8,2	11,2	12	16,5	20	18,8	12,8	11,6	12	15,4	15	14,5	16,5		18,8	3,8	11,5	
	Noise (db)	/	52	52	50	53	50	55	50	50	53	53	53	53	53	53	55	50	54,5	
	Ambient temperature (°C)	10~32°C	10~32°C	10~32°C	10~32°C	10~32°C	10~32°C	10~32°C	10~32°C	10~32°C	10~32°C	10~32°C	10~32°C	10~32°C	10~32°C	10~32°C	10~32°C	10~32°C	10~32°C	10~32°C
	Temperature range (°C)	-40~-86°C	-40~-86°C	-40~-86°C	-40~-86°C	-40~-86°C	-40~-86°C	-40~-86°C	-40~-86°C	-40~-86°C	-40~-86°C	-40~-86°C	-40~-86°C	-40~-86°C	-40~-86°C	-40~-86°C	-40~-86°C	-40~-86°C	-40~-86°C	-40~-86°C
Power	Compressor brand/QTY	SECOPI1	CUBISEL1	SECOPI1	SECOPI1	SECOPI2	SECOPI2	SECOPI2	SECOPI1	SECOPI2	SECOPI2	SECOPI2	SECOPI2	SECOPI2	SECOPI2	SECOPI2	SECOPI2	CUBISEL1	SECOPI1	
	Sensor	PTC	PTC	PTC	PTC	PTC	PTC	PTC	PTC	PTC	PTC	PTC	PTC	PTC	PTC	PTC	PTC	PTC	PTC	
	Temperature controller	Microprocessor	Microprocessor	Microprocessor	Microprocessor	Microprocessor	Microprocessor	Microprocessor	Microprocessor	Microprocessor	Microprocessor	Microprocessor	Microprocessor	Microprocessor	Microprocessor	Microprocessor	Microprocessor	Microprocessor	Microprocessor	
	Display	Digital display	Digital display	Digital display	Digital display	Digital display	Digital display	Digital display	Digital display	LCD display	LCD display	LCD display	LCD display	LCD display	LCD display	LCD display	LCD display	LCD display	Digital display	Digital display
Material	Voltage/frequency (V/Hz)	220/50Hz	220/50Hz	220/50Hz	220/50Hz	220/50Hz	220/50Hz	220/50Hz	220/50Hz	220/50Hz	220/50Hz	220/50Hz	220/50Hz	220/50Hz	220/50Hz	220/50Hz	220/50Hz	220/50Hz	220/50Hz	
	Power (W)	442W	660W	810W	890W	1500W	1400W	1700W	870W	845W	815W	935W	890W	1350W	1500W	1700W	500W	670W		
	Current (A)	2,67A	4,3A	5A	4,6A	9,1A	8,8	9,8A	6,75A	7A	7A	7A	7A	8A	9,1A	9,8A	2,9	3,57		
	Inside material	Stainless steel	Stainless steel	Stainless steel	Stainless steel	Stainless steel	Stainless steel	Stainless steel	Stainless steel	Stainless steel	Stainless steel	Stainless steel	Stainless steel	Stainless steel	Stainless steel	Stainless steel	Stainless steel	Stainless steel	Stainless steel	Stainless steel
Size	Outside material	Color sprayed steel	Color sprayed steel	Color sprayed steel	Color sprayed steel	Color sprayed steel	Color sprayed steel	Color sprayed steel	Color sprayed steel	Color sprayed steel	Color sprayed steel	Color sprayed steel	Color sprayed steel	Color sprayed steel	Color sprayed steel	Color sprayed steel	Color sprayed steel	Color sprayed steel	Color sprayed steel	
	Insulation	PURF	PURF	PURF	PURF	PURF	PURF	PURF	PURF	PURF	PURF	PURF	PURF	PURF	PURF	PURF	PURF	PURF	PURF	
	Capacity (L/cu.ft)	58L	188,63	340/12	408/14,40	588/20,76	728/25,7	838/29,59	338/11,93	408/14,40	588/20,76	728/25,7	838/29,59	408	588	728	838	105/3,70	485/17,12	
	NT/GT (kg)	115/155	174/224	222/283,5	234/291	290/360	374/394	344/430	250/305	292/317	307/366	360/401,5	397/430	255/307	297,5/358,5	360/401,5	336,5/416	63,7/88,5	127/152,5	
	Exterior size(W*D*H)(mm)	635*757*1212	850*930*1595	875*980*1900	890*930*1945	880*1090*1995	1229*1012*1994,5	1175*1075*1990	880*980*1940	900*940*1940	880*1080*2000	1280*890*2010	1190*1045*2010	900*940*1940	885*1100*1995	1260*890*2010	1190*1045*2010	680*580*935	1700*830*980	
	Interior size(W*D*H)(mm)	330*453*410	465*485*830	488*607*1140	606*575*1180	606*738*1310	963*571*1350	894*718*1310	488*607*1140	606*575*1180	606*738*1310	963*558*1350	894*718*1310	606*575*1180	606*738*1310	963*558*1350	894*718*1310	480*380*665	1455,5*525,2*674	
	Package size(W*D*H)(mm)	730*845*1400	880*910*1820	935*1070*2130	955*955*2100	970*1140*2190	1320*970*2185	1270*1100*2185	940*1070*2130	955*960*2100	975*1140*2200	1320*970*2190	1270*1105*2220	955*960*2100	970*1140*2190	1320*970*2190	1270*1105*2220	770*705*1090	1780*910*1080	
	CBM	0,87	1,46	2,13	2,42	2,9	2,79	3,05	2,14	1,93	2,45	2,80	3,12	1,93	2,42	2,8	3,12	0,59	1,75	
	20GP/40GP/40HQ	214/343	122/226	12/24/24	12/24/24	12/24/24	10/21/21	8/18/18	12/24/24	12/24/24	12/24/24	12/24/24	8/18/18	8/18/18	12/24/24	12/24/24	2,80	8/18/18	24/51/51	61/131
	Racks	2(6X2)	9(4X3)	12(4X4)	16(5X4,4X4)	16(5X5)	24(5*4*6*4)	24(5X5)	12(4X4)	16(5X4,4X4)	16(5X5)	18(5X4)+6(6X4)	24(5X5)	16(5X4,4X4)	16(5X5)	8/18/18	24(5X5)	8/18/18	4(11X1,6X1)	30(11X1,6X1)
Alarm	Boxes (2 Inches)	24	108	192	288	400	504	600	192	288	400	504	600	288	400	504	600	34	30	
	Samples(2mt)	2400	10800	19200	28800	40000	50400	60000	19200	28800	40000	50400	60000	28800	40000	50400	60000	3400	30000	
	High/low temperature	Y	Y	Y	Y	Y	Y	Y	Y	Y	Y	Y	Y	Y	Y	Y	Y	Y	Y	
	Power failure	Y	Y	Y	Y	Y	Y	Y	Y	Y	Y	Y	Y	Y	Y	Y	Y	Y	Y	
	Abnormal voltage	Y	Y	Y	Y	Y	Y	Y	Y	Y	Y	Y	Y	Y	Y	Y	Y	Y	Y	
	Sensor error	Y	Y	Y	Y	Y	Y	Y	Y	Y	Y	Y	Y	Y	Y	Y	Y	Y	Y	
	Filter screen check	Y	Y	Y	Y	Y	Y	Y	Y	Y	Y	Y	Y	Y	Y	Y	Y	Y	Y	
	Thermostat failure	Y	Y	Y	Y	Y	Y	Y	Y	Y	Y	Y	Y	Y	Y	Y	Y	Y	Y	
	Low battery	Y	Y	Y	Y	Y	Y	Y	Y	Y	Y	Y	Y	Y	Y	Y	Y	Y	Y	
	Condenser clean	Y	Y	Y	Y	Y	Y	Y	Y	Y	Y	Y	Y	Y	Y	Y	Y	Y	Y	
Accessories	High ambient temperature	Y	Y	Y	Y	Y	Y	Y	Y	Y	Y	Y	Y	Y	Y	Y	Y	Y	Y	
	Door ajar	Y	Y	Y	Y	Y	Y	Y	Y	Y	Y	Y	Y	Y	Y	Y	Y	Y	Y	
	Power failure backup system(24h)	72h	72h	72h	72h	72h	72h	72h	72h	72h	72h	72h	72h	72h	72h	72h	72h	72h	12h	
	Inside door	1	3	2	2	2	2	2	2	2	2	2	2	2	2	2	2	2	2	
	Test hole QTY/diameter	1/25MM	1/25MM	1/25MM	1/25MM	1/25MM	1/25MM	1/25MM	1/25MM	1/25MM	1/25MM	1/25MM	1/25MM	1/25MM	1/25MM	1/25MM	1/25MM	1/25MM	1/25MM	
	USB port	Y	Y	Y	Y	Y	Y	Y	Y	Y	Y	Y	Y	Y	Y	Y	Y	Y	Y	
	Chart recorder	/	/	/	/	/	/	/	/	/	/	/	/	/	/	/	/	/	/	
	Data logger	Optional	Optional	Optional	Optional	Optional	Optional	Optional	Optional	Optional	Optional	Optional	Optional	Optional	Optional	Optional	Optional	Optional	Optional	
	Remotes alarm port	Y	Y	Y	Y	Y	Y	Y	Y	Y	Y	Y	Y	Y	Y	Y	Y	Y	Y	
	Optional	CO2 back up system	Optional	Optional	Optional	Optional	Optional	Optional	Optional	Optional	Optional	Optional	Optional	Optional	Optional	Optional	Optional	Optional	Optional	Optional
LN2 back up system		Optional	Optional	Optional	Optional	Optional	Optional	Optional	Optional	Optional	Optional	Optional	Optional	Optional	Optional	Optional	Optional	Optional	Optional	
Other	Certification	ISO,CE	ISO,CE	ISO,CE	ISO,CE	ISO,CE	ISO,CE	ISO,CE	ISO,CE	ISO,CE	ISO,CE	ISO,CE	ISO,CE	ISO,CE	ISO,CE	ISO,CE	ISO,CE	ISO,CE	ISO,CE	

If undelivered please return to below address

Book Post



Scientific Research Instruments Company Private Limited

42-43, 2nd & 3rd Floor, 1st Cross, Gubbalala, Bengaluru - 560 061

Telephone : 080 4757 2577 | 080 4302 5791

Sales

info@srico-labworld.com

Mobile : +91 9900674407

Service

service@srico-labworld.com

Mobile : +91 9900055879

Bhubaneswar | Hyderabad | New Delhi | Navi Mumbai | Vadodara

Ahmedabad | Chandigarh | Chennai | Goa | Guwahati | Kolkata | Lucknow | Pune | Thiruvananthapuram | Visakhapatnam



www.srico-labworld.com